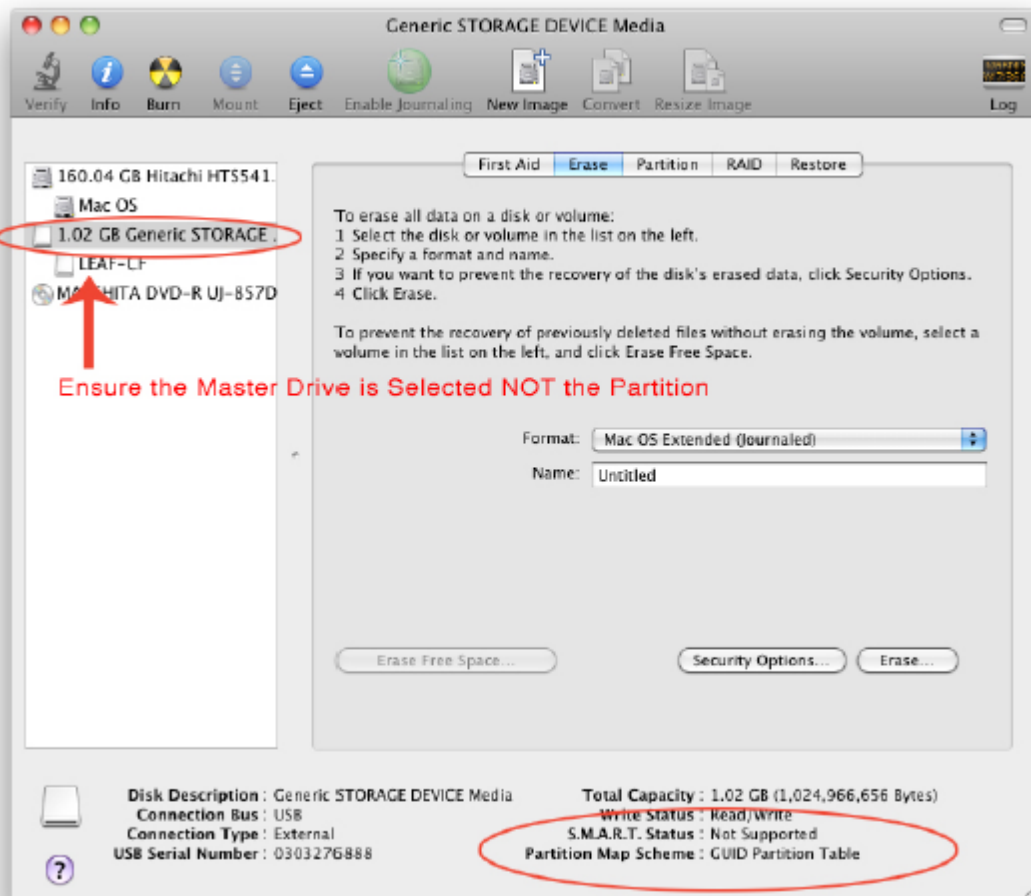


Formatting a CF card for Leaf backs on Mac OS 10.6.X

Master Boot Record Partition Is Necessary

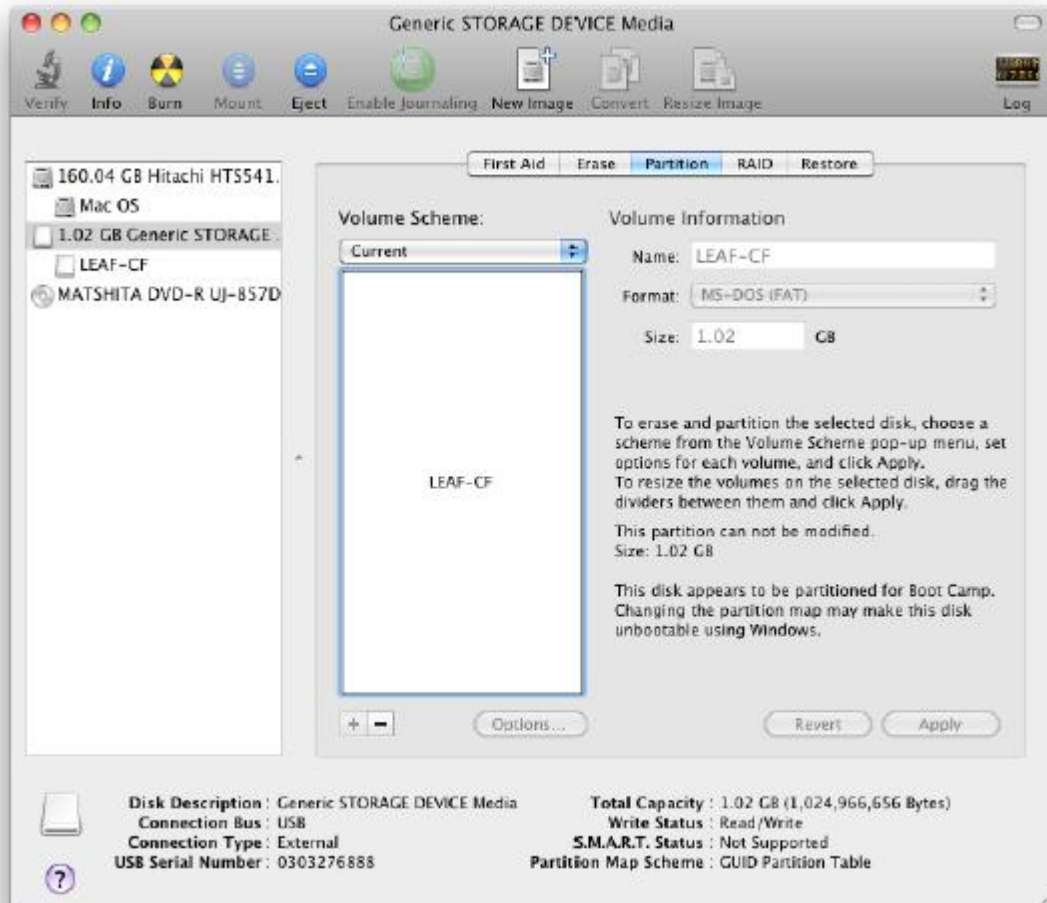
If your freshly formatted CF card is not working in your Leaf back the first thing to do is to reformat with the Disk Utility.

1. Insert your card and check the Partition Map Scheme. If it is GUID Partition Table then you must reformat.

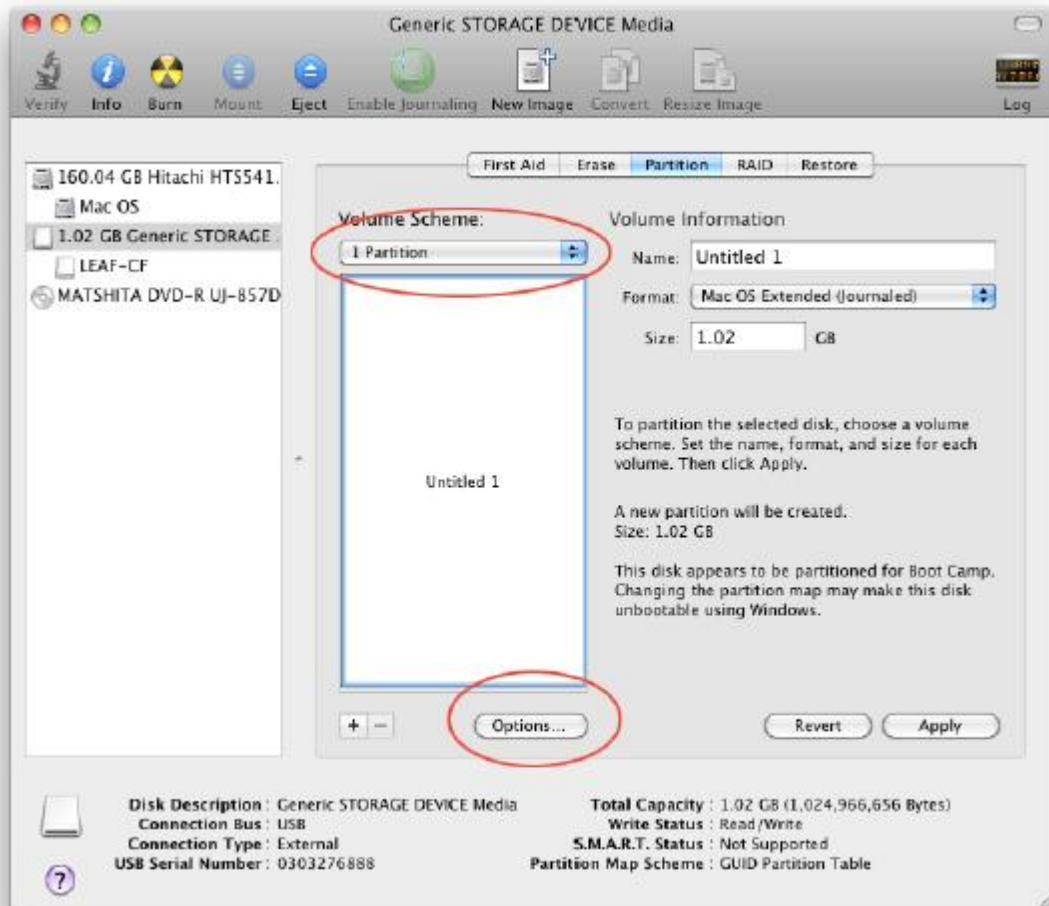


2. Make sure you have selected the highest level of the CF card. E.g. 1.02 Generic STORAGE

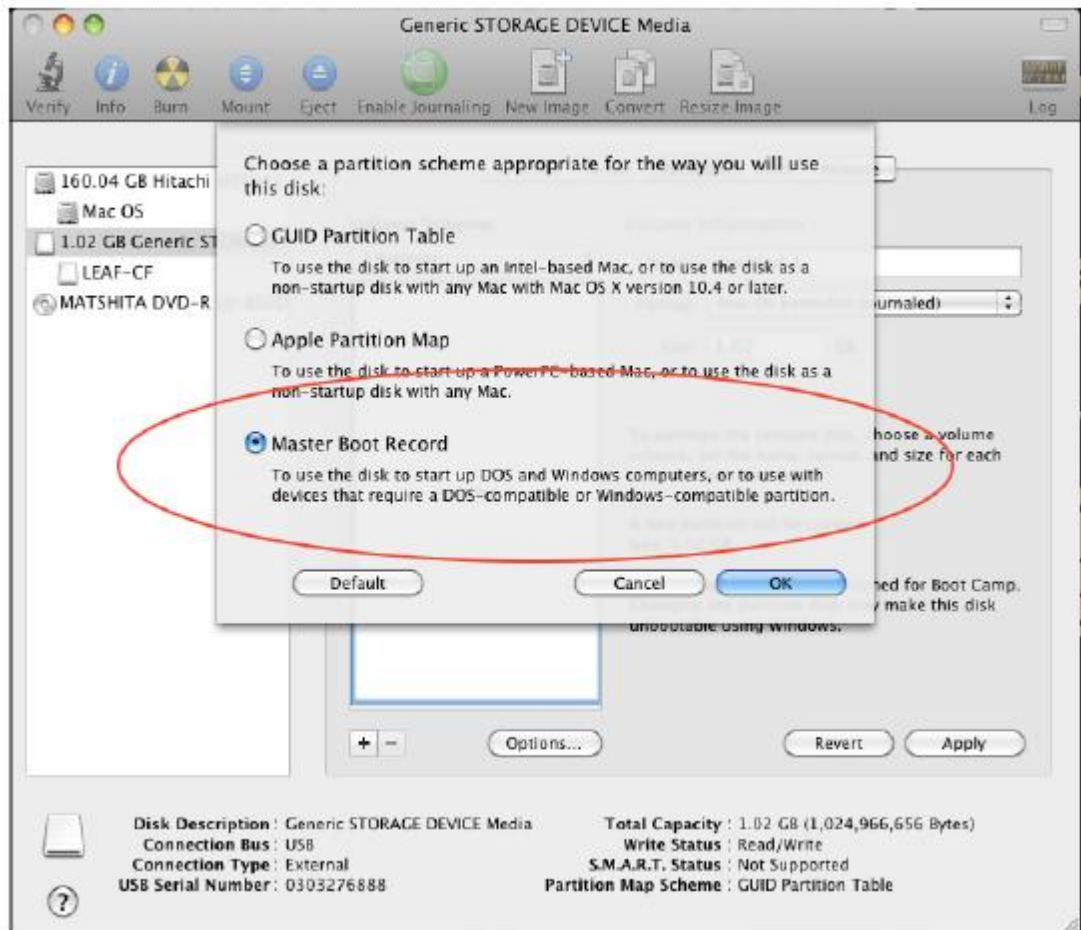
3. Select the Partition tab.



4. Select a Volume Scheme of "1 Partition", you can then select "Options"



5. Select "Master Boot Record" from the Partition Options and then "OK" the partition.



6. Type in LEAF-CF for the volume name.
7. Select MS DOS (FAT 32)
8. Click apply and then click Partition in the window that opens.
9. Your card will be formatted for use in a Leaf back.
10. Click "APPLY" and then you simply need to REFORMAT in MS-DOS FAT 32 with the name "LEAF-CF".