

Release Notes



Leaf Capture Software Version 11.5.3

Revised 23 February 2012

Copyright

© Leaf Imaging Ltd. 2011. All rights reserved. Leaf, the Leaf logo, and Aptus are trademarks of Leaf Imaging Ltd.

This document is also distributed in Adobe Systems Incorporated's PDF (Portable Document Format). You may reproduce the document from the PDF file for internal use. Copies produced from the PDF file must be reproduced in whole.

Trademarks

Leaf Imaging Ltd. and Leaf are trademarks of Leaf Imaging Ltd..

Mamiya is a registered trademark of Mamiya Digital Imaging Co., Ltd.

Adobe, Acrobat, Adobe Illustrator, Distiller, Photoshop, PostScript, and PageMaker are trademarks of Adobe Systems Incorporated.

Apple, iMac, Power Macintosh, Mac OS, AppleShare, AppleTalk, TrueType, ImageWriter, and LaserWriter are registered trademarks of Apple Computer, Inc. Macintosh is a trademark of Apple Computer, Inc., registered in the U.S.A. and other countries.

FCC Compliance

Any Leaf Imaging Ltd. equipment referred to in this document complies with the requirements in part 15 of the FCC Rules for a Class A digital device. Operation of the Leaf Imaging Ltd. equipment in a residential area may cause unacceptable interference to radio and TV reception, requiring the operator to take whatever steps are necessary to correct the interference.

Equipment Recycling



In the European Union, this symbol indicates that when the last user wishes to discard this product, it must be sent to appropriate facilities for recovery and recycling.

Contact your local Leaf Imaging Ltd. representative for information on the collection and recovery programs available for this product.

Limitation of Liability

The product, software or services are being provided on an "as is" and "as available" basis. Except as may be stated specifically in your contract, Leaf Imaging Ltd. expressly disclaims all warranties of any kind, whether express or implied, including, but not limited to, any implied warranties of merchantability, fitness for a particular purpose and non-infringement.

You understand and agree that, except as may be stated specifically in your contract, Leaf Imaging Ltd. shall not be liable for any direct, indirect, incidental, special, consequential or exemplary damages, including but not limited to, damages for loss of profits, goodwill, use, data or other intangible losses (even if Leaf Imaging Ltd. has been advised of the possibility of such damages), resulting from: (i) the use or the inability to use the product or software; (ii) the cost of procurement of substitute goods and services resulting from any products, goods, data, software, information or services purchased; (iii) unauthorized access to or alteration of your products, software or data; (iv) statements or conduct of any third party; (v) any other matter relating to the product, software, or services.

The text and drawings herein are for illustration and reference only. The specifications on which they are based are subject to change. Leaf Imaging Ltd. may, at any time and without notice, make changes to this document. Leaf Imaging Ltd. assumes no liability for technical or editorial errors or omissions made herein, and shall not be liable for incidental, consequential, indirect, or special damages, including, without limitation, loss of use, loss or alteration of data, delays, or lost profits or savings arising from the use of this document.

<http://www.leaf-photography.com>

23 February 2012

Contents

Introduction.....	1
Fixed issues.....	1
Uploading firmware to camera backs	2
Minimum system requirements.....	2
Minimum system specifications for high resolution backs	4
Leaf Capture product compatibility	4
About Leaf Capture installation	4

Introduction

Leaf® Capture is an image capture and processing workflow software that has been designed for you to make the most of the images you take with your Leaf products, and to improve your productivity.

The intuitive Leaf Capture user interface guides you through the image capture workflow. Since you can use it to check and perfect your images while you shoot, Leaf Capture serves as the ideal match for high-volume productions on tight deadlines, such as catalog and fashion shoots. Leaf Capture enables you to produce outstanding quality images with fine details and accurate colors. Since the software is focused on professional photographic requirements, it supports editing and managing of files in both tethered and portable shooting modes.

[Download](#) Leaf Capture 11.5.3

Fixed issues

Minor bug fixes.

Improvements in Shutter Speed accuracy when shooting at high shutter speeds when using leaf shutter lenses on Mamiya/PhaseOne DF cameras.

Battery power issue when shooting a sustained, continuous burst on AFi-II 12 to CF card.

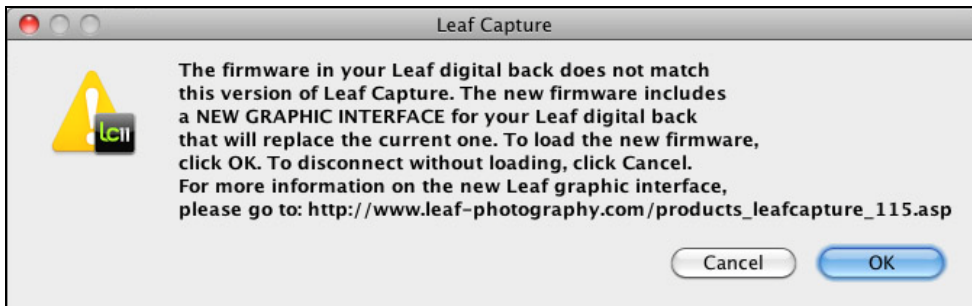
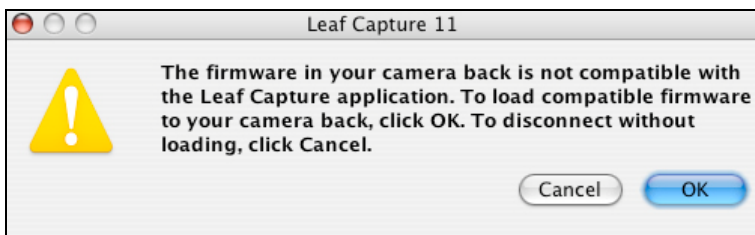
Uploading firmware to camera backs

When connecting a Leaf Aptus, Aptus-II, AFi-II, AFi or Mamiya DM to Leaf Capture 11.5.3 for the first time, follow this procedure to ensure that the new firmware (if applicable) will be loaded to the camera back:

Launch the Leaf Capture software.

Connect your camera back to the computer.

Depending on your hardware, when you connect your camera back to the Leaf Capture software, one of the following messages may appear:



Click OK. The camera back firmware is updated. You will see a progress bar at the bottom-left corner of the Leaf Capture window.

This process may take up to 10 minutes.

Do not disconnect the FireWire cable and do not mount or dismount a CF card during this process.

Minimum system requirements

The following minimum system components are required for running the Leaf Capture software:

	Intel-based Macintosh
Processor	Dual Core Intel Xeon or 2.4 GHz Intel Core 2 Duo

Memory	2 GB
Operating system	Mac OS X version 10.5.8

Minimum system specifications for high resolution backs

	Intel Based Macintosh
Processor	2.8 GHz Quad-Core Intel® Xeon® or 2.66 GHz Intel Core i7
Memory	4 GB
Operating system	Mac OS X version 10.6

Note for Lion 10.7 users:

On some new Macs, the pre-installed 10.7 OS is missing some Java modules that are essential for smooth installation and running of Leaf Capture 11.5.3. If these modules are missing the OS will issue an error message when you try to run the Leaf Capture Installer and you will not be able to complete the installation

We recommend that you run a full software update after setting up your new Mac or alternatively follow the below link to download and install the necessary modules:

<http://support.apple.com/kb/DL1421>

Leaf Capture product compatibility

This version of the Leaf Capture software has been verified for compatibility on the following digital backs: Aptus-II, Aptus S, Aptus, AFi II, AFi and Mamiya DM digital backs.

About Leaf Capture installation

Installing Leaf Capture

The Leaf Capture installation wizard requires that no other applications are running during the installation. If you are working in other applications, make sure you save your work before launching the Leaf Capture installation.

Computer restarts after installation

If a driver that is new to your computer is installed during the Leaf Capture version 11.5.3 software installation, Leaf Capture restarts your

computer at the end of the installation. If you are working in other applications, make sure you save your work first.

Preferences are reset after installation

The installation automatically resets your Leaf Capture preferences.

Note: If you have multiple user accounts, the preferences are reset only for the user who installs the Leaf Capture software. All other users must manually reset their preferences:

- Locate **Applications > Leaf Capture 11 > Utilities**, and double-click **Reset Preferences**.