



Installation and User Guide

Leaf Capture Remote – Version 2.1.1

Copyright

© Leaf Imaging Ltd. 2011. All rights reserved. Leaf, the Leaf logo, and Aptus are trademarks of Leaf Imaging Ltd.

This document is also distributed in Adobe Systems Incorporated's PDF (Portable Document Format). You may reproduce the document from the PDF file for internal use. Copies produced from the PDF file must be reproduced in whole.

Trademarks

Adobe, Acrobat, Adobe Illustrator, Distiller, Photoshop, PostScript, and PageMaker are trademarks of Adobe Systems Incorporated.

Apple, iPad, iPod, iPhone, iMac, Power Macintosh, Mac OS, AppleShare, AppleTalk, TrueType, ImageWriter, and LaserWriter are registered trademarks of Apple Computer, Inc. Macintosh is a trademark of Apple Computer, Inc., registered in the U.S.A. and other countries.

FCC Compliance

Any Leaf Imaging Ltd. equipment referred to in this document complies with the requirements in part 15 of the FCC Rules for a Class A digital device. Operation of the Leaf Imaging Ltd. equipment in a residential area may cause unacceptable interference to radio and TV reception, requiring the operator to take whatever steps are necessary to correct the interference.

Limitation of Liability

The product, software or services are being provided on an "as is" and "as available" basis. Except as may be stated specifically in your contract, Leaf Imaging Ltd. expressly disclaims all warranties of any kind, whether express or implied, including, but not limited to, any implied warranties of merchantability, fitness for a particular purpose and non-infringement.

You understand and agree that, except as may be stated specifically in your contract, Leaf Imaging Ltd. shall not be liable for any direct, indirect, incidental, special, consequential or exemplary damages, including but not limited to, damages for loss of profits, goodwill, use, data or other intangible losses (even if Leaf Imaging Ltd. has been advised of the possibility of such damages), resulting from: (i) the use or the inability to use the product or software; (ii) the cost of procurement of substitute goods and services resulting from any products, goods, data, software, information or services purchased; (iii) unauthorized access to or alteration of your products, software or data; (iv) statements or conduct of any third party; (v) any other matter relating to the product, software, or services.

The text and drawings herein are for illustration and reference only. The specifications on which they are based are subject to change. Leaf Imaging Ltd. may, at any time and without notice, make changes to this document. Leaf Imaging Ltd. assumes no liability for technical or editorial errors or omissions made herein, and shall not be liable for incidental, consequential, indirect, or special damages, including, without limitation, loss of use, loss or alteration of data, delays, or lost profits or savings arising from the use of this document.

<http://www.leaf-photography.com>
Revised 18 August 2011

Contents

Introduction.....	3
Minimum System Requirements.....	3
Installing Leaf Capture Remote Application	3
Using the Leaf Capture Remote Server	4
Opening Leaf Capture Remote Client for the First Time	7
Using the Leaf Capture Remote Application	10

Introduction

The Leaf® Capture Remote application enables you to view the images in your Shots folder on your Apple® iPhone™, iPad® and iPod® touch mobile digital devices.

This guide explains how to install the server and client modules of the Leaf Capture Remote application, and how to use the application on your mobile digital device.

Minimum System Requirements

- Ensure that your Mac and mobile digital device are connected to the same Wi-Fi network.
- Apple Mac OS® X operating system software version 10.5.8 or above with Java for Mac OS X 10.5 Update 2 or above.
(http://support.apple.com/downloads/Java_for_Mac_OS_X_10_5_Update_2)
- iPhone, iPad or iPod touch mobile digital device with firmware v. 3.1 and above.
- Leaf Capture 11.3.6 and above.

Installing Leaf Capture Remote Application

Download the following:

- **Leaf Capture Remote** client from the Apple iPhone App Store to your mobile device.
- **Leaf Capture Remote** server to your computer from:
http://www.leaf-photography.com/products_lcremote.asp
- Launch the **Leaf Capture Remote** server installer to install.

Using the Leaf Capture Remote Server

Note: While using the Leaf Capture Remote Server, ensure that internet sharing on your Mac is turned off (**System Preferences > Sharing > Internet**), even if the server is inactive.

Starting and stopping the server

In most cases, the only action you need perform is to start and stop the server.

1. Click the Leaf Capture Remote Server icon in the dock.

The Leaf Capture Remote Server icon changes according to whether or not it is active:



Active



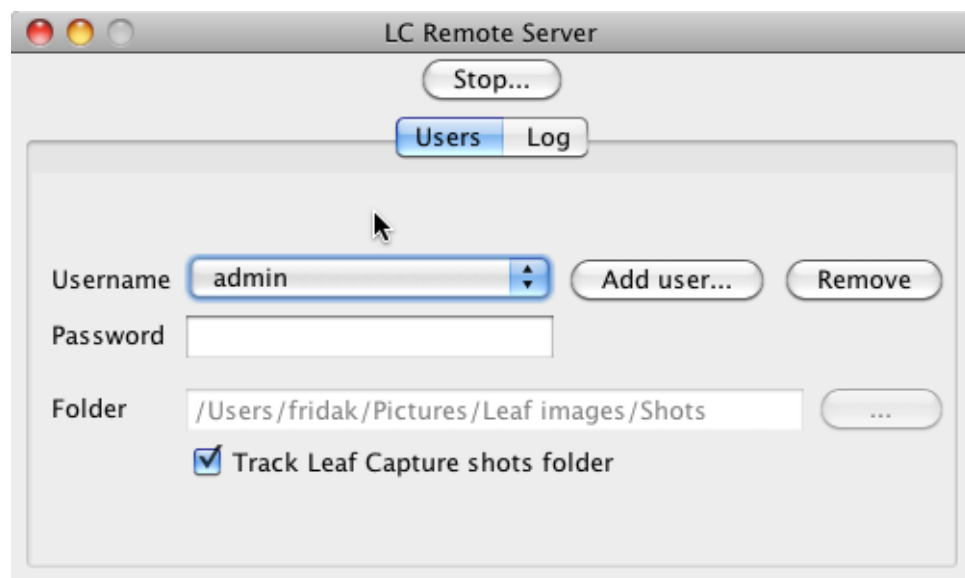
Not Active

2. To start and stop the server, right click the active Leaf Capture Remote Server icon and click **Start/Stop**.

Displaying the log

Open the LC Remote server window to view the log that displays information that may be used for support purposes (for advanced use).

1. Click the Leaf Capture Remote Server icon in the dock.



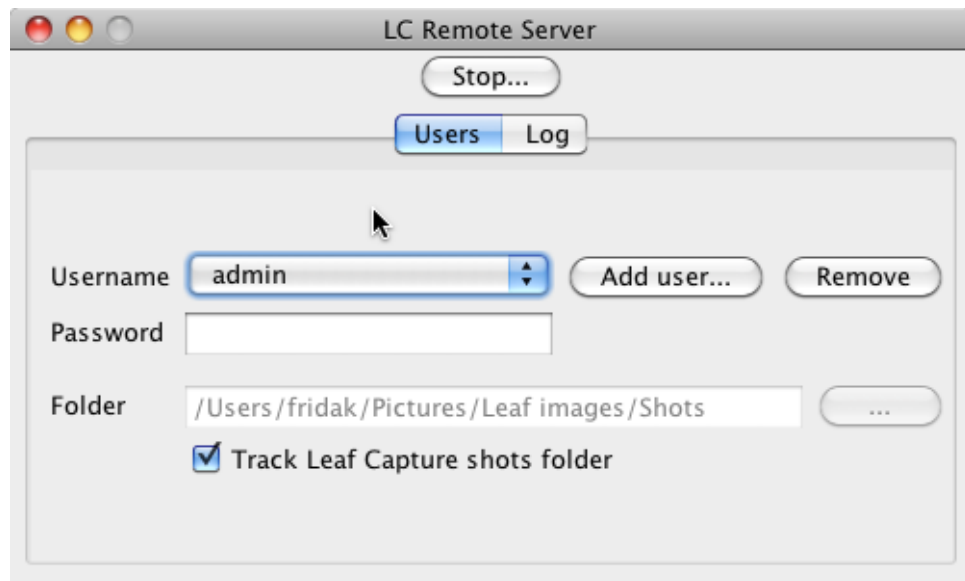
2. Click **Start/Stop** to start and stop the server.

Defining a User and Password

The default user is named admin and there is no password.

If you want to limit the use of the application to a specific user:

1. Click the Users button.

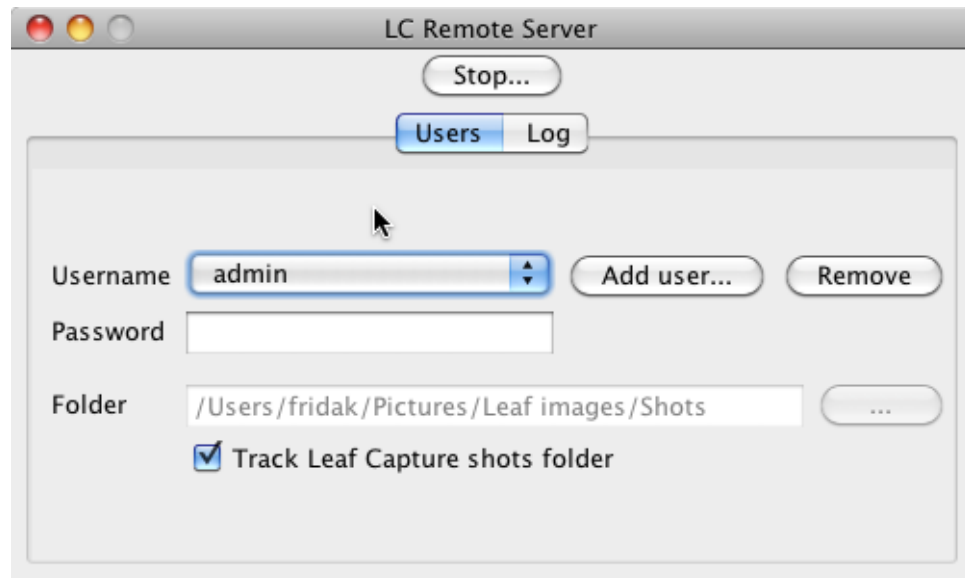


2. Click the Add User icon.



3. Type in a user name and click OK.
4. Type in a password.

Setting the image folder to be viewed in the Leaf Capture remote application

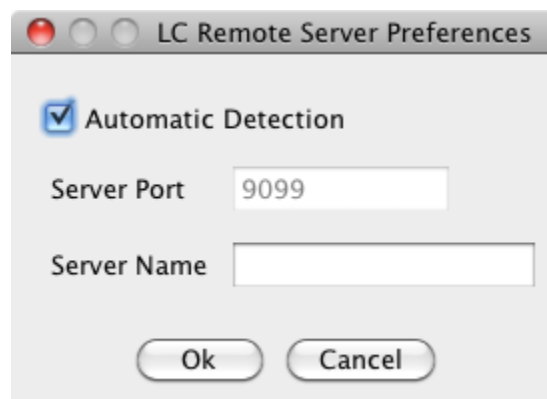


1. By default the Track Leaf Capture shots folder checkbox is checked.
2. To set a different folder, uncheck the checkbox and click the browse button to browse to a folder of your choice.

Setting preferences

Change the name of your Mac that appears on your iPad, iPhone or iPod touch mobile digital device, or change the server port number.

1. Right click the active Leaf Capture Remote Server icon in the dock and select **Preferences** or click LC Remote server on the Main Menu and select **Preferences**.



2. Do one of the following:
 - Select **Automatic Detection** for a server port to be automatically assigned.
 - Clear the **Automatic Detection** check box and enter the desired server port number (if the default number is already used by another application on your computer).

3. The server name (as will be displayed in the LC Remote client) is determined according to the Computer's Name in the Mac OS X Sharing preferences. You can give the LC Remote server an alias by entering a new server name.
4. Click **OK**.

Opening Leaf Capture Remote Client for the First Time

Ensure that your Mac and mobile digital device are connected to the same Wi-Fi network.

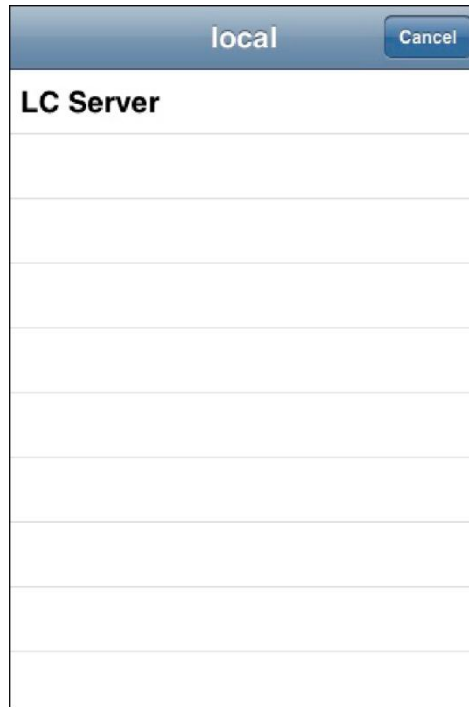
1. Ensure the Leaf Capture Remote Server is running.
2. On your device, tap the Leaf Capture Remote Client icon.



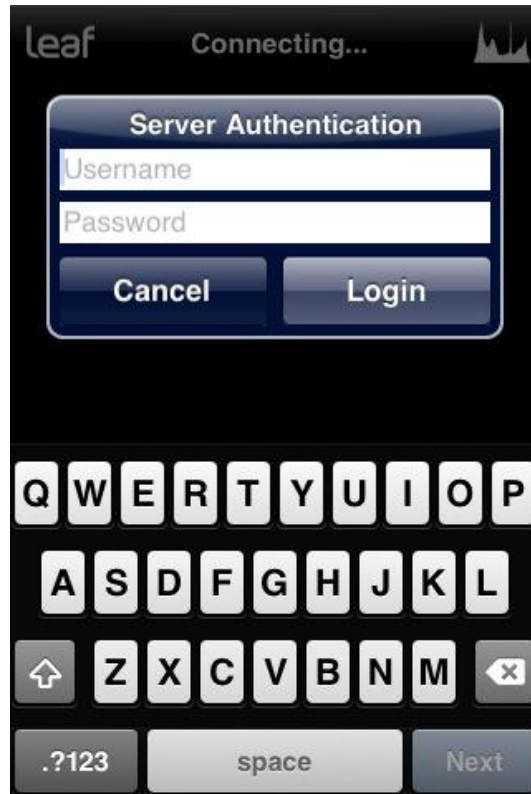
The following message appears:



3. Tap **Browse**.



4. Tap the Leaf Capture Remote Server that you want to connect to.
You can now view the contents of your Shots folder on your iPad, iPhone or iPod touch mobile digital device.
5. If you have defined a user and password then type them into the following window.



6. Click the Login button to start viewing your images.

Using the Leaf Capture Remote Application

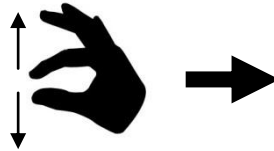
To open the Leaf Capture Remote application:

- Tap the LC Remote icon on your iPad, iPhone or iPod touch mobile digital device. The application opens on the last image in the Shots folder.

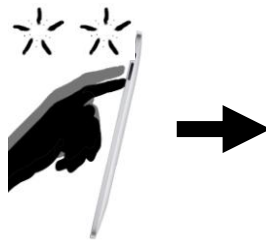


Use the digital device functionality to navigate your images.

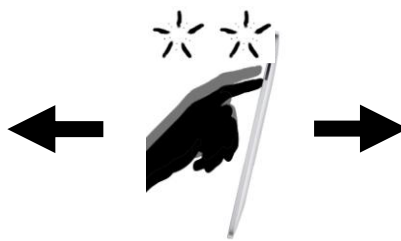
Pause/Play display of new images	Tap Pause/Play button
Zoom in or out	Pinch your fingers together or apart
Zoom in to 100% magnification and out to fit to screen size	Double tap image at the zoom location
Pan (when zoomed in)	Drag your finger on the image
Rotate image portrait/landscape	Rotate the device
Refresh the displayed image	Tap the Refresh icon
Browse the images in your Shots folder	Tap the arrows or drag the images sideways
Change server	Tap the search icon



➤ Zooming in or out.



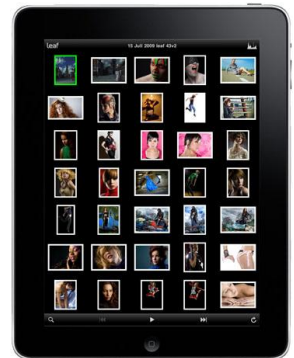
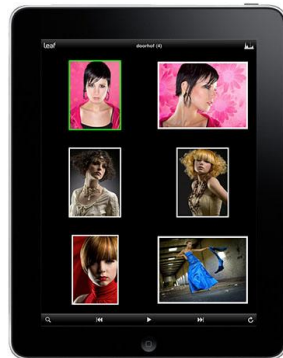
➤ Navigating between thumbnail view and full view.



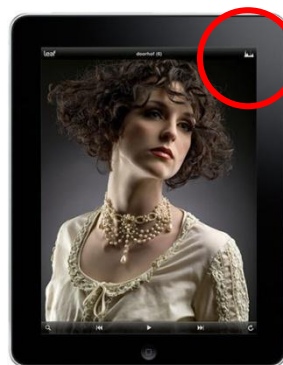
➤ Zooming in or out.



➤ Navigating from full view to thumbnail view.



➤ Navigating between thumbnail views.



➤ Activating the Histogram.



➤ Enlarging the Histogram.



➤ Activating full screen view.

