



Leaf Capture Remote Server – Version 2.1.1

Installation and Configuration Guide



Copyright

Capture One, Capture Pilot and Phase One are either registered trademarks or trademarks of Phase One A/S in the European Union and/or other countries.

Adobe, Acrobat, Adobe InDesign, Adobe Illustrator, Photoshop, and are trademarks of Adobe Systems Incorporated.

Apple, iPad, iPod, iPhone, iMac, Power Macintosh, iOS, Mac OS, are registered trademarks of Apple Computer, Inc. Macintosh is a trademark of Apple Computer, Inc., registered in the U.S.A. and other countries.

Android is a trademark of Google Inc.

Windows is a registered trademark of Microsoft Corporation in the United States and other countries.

FCC Compliance

Any Leaf Imaging Ltd. equipment referred to in this document complies with the requirements in part 15 of the FCC Rules for a Class A digital device. Operation of the Leaf Imaging Ltd. equipment in a residential area may cause unacceptable interference to radio and TV reception, requiring the operator to take whatever steps are necessary to correct the interference.

Limitation of Liability

The product, software or services are being provided on an "as is" and "as available" basis. Except as may be stated specifically in your contract, Leaf Imaging Ltd. expressly disclaims all warranties of any kind, whether express or implied, including, but not limited to, any implied warranties of merchantability, fitness for a particular purpose and non-infringement.

You understand and agree that, except as may be stated specifically in your contract, Leaf Imaging Ltd. shall not be liable for any direct, indirect, incidental, special, consequential or exemplary damages, including but not limited to, damages for loss of profits, goodwill, use, data or other intangible losses (even if Leaf Imaging Ltd. has been advised of the possibility of such damages), resulting from: (i) the use or the inability to use the product or software; (ii) the cost of procurement of substitute goods and services resulting from any products, goods, data, software, information or services purchased; (iii) unauthorized access to or alteration of your products, software or data; (iv) statements or conduct of any third party; (v) any other matter relating to the product, software, or services.

The text and drawings herein are for illustration and reference only. The specifications on which they are based are subject to change. Leaf Imaging Ltd. may, at any time and without notice, make changes to this document. Leaf Imaging Ltd. assumes no liability for technical or editorial errors or omissions made herein, and shall not be liable for incidental, consequential, indirect, or special damages, including, without limitation, loss of use, loss or alteration of data, delays, or lost profits or savings arising from the use of this document.

<http://www.mamiyaleaf.com>

Revised 4 December 2012



Contents

Introduction	4
Minimum System Requirements	4
Installing the Leaf Capture Remote Server	4
Configuring the Leaf Capture Remote Server	5



Introduction

The Leaf® Capture Remote server enables you to view the images in your Shots folder on your Apple® iPhone™, iPad® and iPod® touch mobile digital devices.

This guide explains how to install the Leaf Capture Remote server..

Minimum System Requirements

- Ensure that your Mac and mobile digital device are connected to the same Wi-Fi network.
- Apple Mac OS® X operating system software version 10.5.8 or above with Java for Mac OS X 10.5 Update 2 or above.
(http://support.apple.com/downloads/Java_for_Mac_OS_X_10_5_Update_2)
- Leaf Capture 11.3.6 and above.

Installing the Leaf Capture Remote Server

Download the following:

- **Capture Pilot** client from the Apple iPhone App Store to your mobile device.
- **Leaf Capture Remote** server to your computer from:
http://www.mamiyaleaf.com/products_lcremote.asp
- Launch the **Leaf Capture Remote** server installer to install.

Configuring the Leaf Capture Remote Server

Note: While using the Leaf Capture Remote Server, ensure that internet sharing on your Mac is turned off (**System Preferences > Sharing > Internet**), even if the server is inactive.

Starting and stopping the server

In most cases, the only action you need perform is to start and stop the server.

1. Click the Leaf Capture Remote Server icon in the dock.

The Leaf Capture Remote Server icon changes according to whether or not it is active:



Active



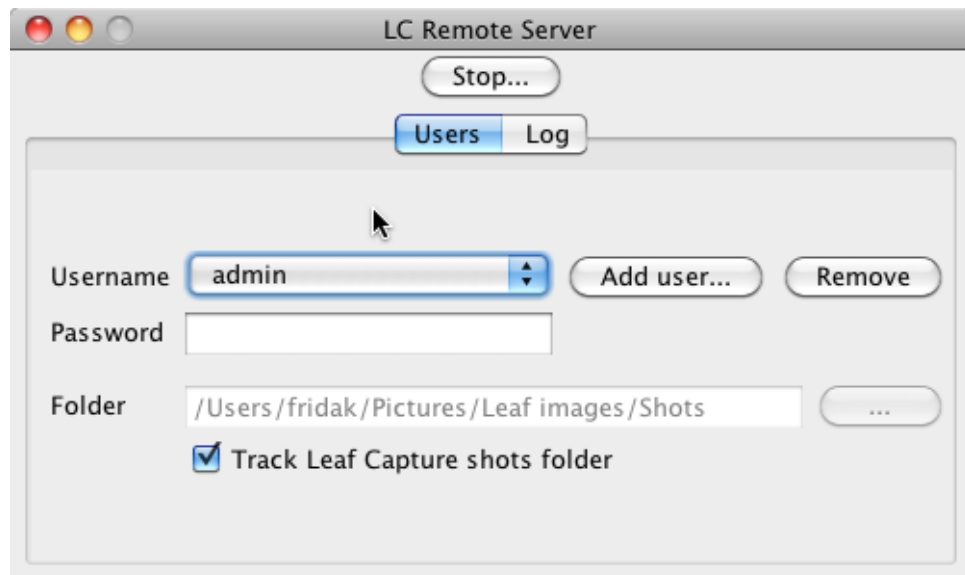
Not Active

2. To start and stop the server, right click the active Leaf Capture Remote Server icon and click **Start/Stop**.

Displaying the log

Open the LC Remote server window to view the log that displays information that may be used for support purposes (for advanced use).

1. Click the Leaf Capture Remote Server icon in the dock.



2. Click **Start/Stop** to start and stop the server.

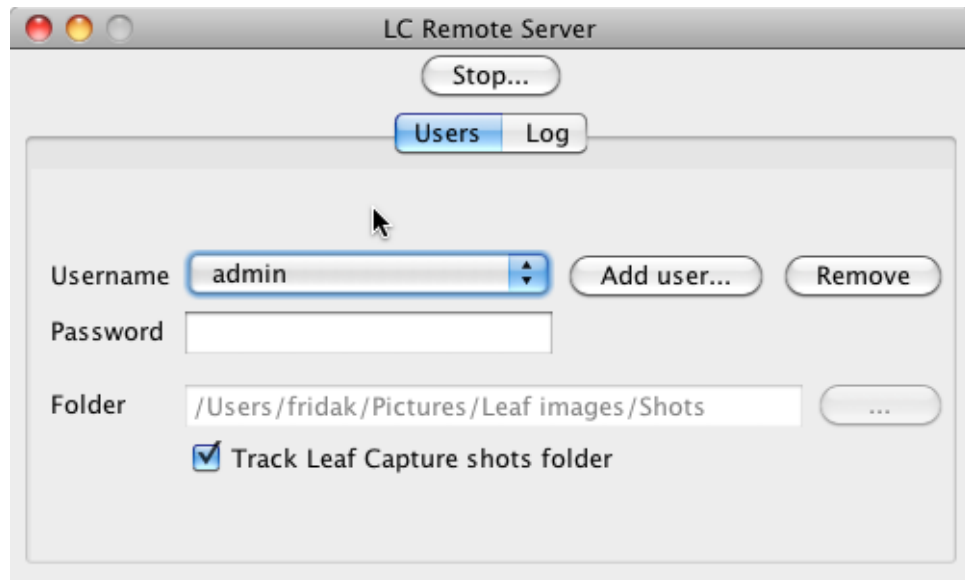
Mamiya Leaf

Defining a Username and Password

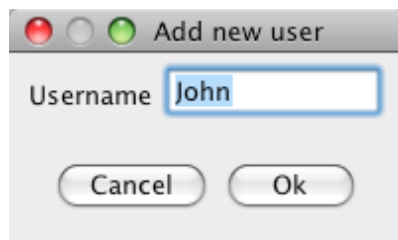
The default username is admin and there is no password.

If you want to limit the use of the application to a specific user:

1. Click the Users button.

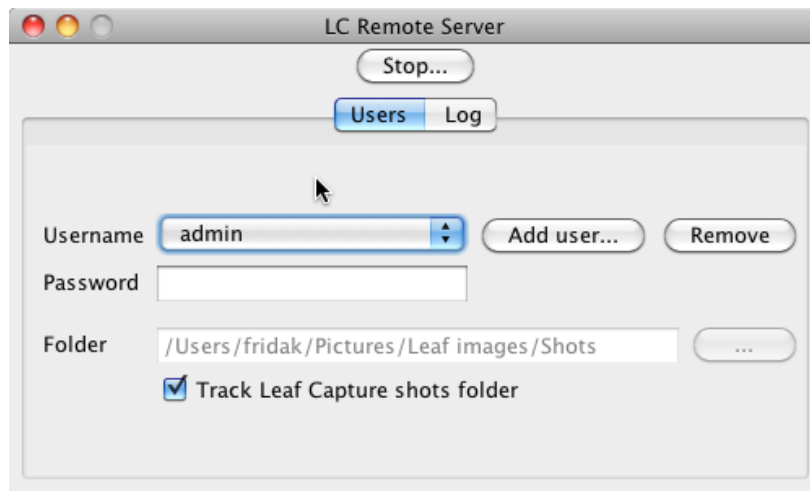


2. Click the Add User icon.



3. Type in a user name and click OK.
4. Type in a password.

Setting the image folder to be viewed in the Leaf Capture remote application

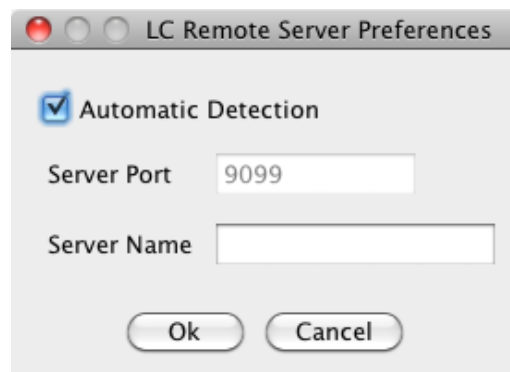


1. By default the Track Leaf Capture shots folder checkbox is checked.
2. To set a different folder, uncheck the checkbox and click the browse button to browse to a folder of your choice.

Setting preferences

Change the name of your Mac that appears on your iPad, iPhone or iPod touch mobile digital device, or change the server port number.

1. Right click the active Leaf Capture Remote Server icon in the dock and select **Preferences** or click LC Remote server on the Main Menu and select **Preferences**.



2. Do one of the following:
 - Select **Automatic Detection** for a server port to be automatically assigned.
 - Clear the **Automatic Detection** check box and enter the desired server port number (if the default number is already used by another application on your computer).
3. The server name (displayed in Capture Pilot) is determined according to the Computer's Name in the Mac OS X Sharing preferences. You can give the LC Remote server an alias by entering a new server name.
4. Click **OK**.